

The background of the slide is a light gray gradient with several realistic water droplets of various sizes scattered across it. The droplets have highlights and shadows, giving them a three-dimensional appearance. The main title is centered in a large, bold, black sans-serif font.

# **POOL REOPENING OPTIONS FOR THE 2021 SUMMER SEASON**

CITY COUNCIL PRESENTATION APRIL 28<sup>TH</sup> 2021

# TWO OVERARCHING RECOMMENDATIONS

## OPTION 1:

- AMENDING POOL HOURS
  - SEPARATES DAY CAMP AND THE PUBLIC BY TIME

## OPTION 2:

- PHYSICALLY 'BARRICADING' OFF PUBLIC ACCESS TO ¼ OF THE POOL AND THE POOL-HOUSE
  - SEPARATES DAY CAMP AND THE PUBLIC PHYSICALLY

These two options have some similarities:

1. Pool Opening Timeline Changes
2. Waiver Form Requirements
3. Temporary User Fee Changes for 2021 Season
4. Masks and Distancing

# POOL OPENING TIMELINE UPDATES

- NEW FOR 2021 SUMMER SEASON:
  - POOL OPENING 1<sup>ST</sup> WEEK OF JULY- EXACT DATE TBD
  - POOL CLOSING AUGUST 22<sup>ND</sup>.

# WAIVER FORM REQUIREMENTS

- ALL POOL PASS PURCHASERS WILL NEED TO SIGN A WAIVER THAT ACKNOWLEDGES THEY WILL HOLD THE CITY HARMLESS IN CASE OF A COVID OUTBREAK
- SWIMMING LESSONS WILL ALSO REQUIRE A WAIVER
- WAIVERS WILL BE POSTED AS A FLYER/POSTER AT THE ENTRANCE TO THE POOL- PAYING TO ENTER THE POOL ASSUMES AGREEMENT WITH THE WAIVER

# TEMPORARY SUGGESTED USER FEE CHANGES FOR 2021 SEASON

- POOL PASSES AND SWIM LESSON COSTS WILL REMAIN THE SAME
- ONLY UPDATES WILL BE TO DAILY PASSES (WALK-IN'S):

Daily Pass Type	2020		2021 Recommended Change	
	Resident Fee	Non-Resident Fee	Resident Fee	Non-Resident Fee
Family	\$14	\$21	\$15	\$22
Adult	\$6	\$12	\$7	\$13
Student K-12	\$4.50	\$9	\$5	\$10
Age 2-5	\$4.50	\$9	\$5	\$10
Age 65+	Free	\$9	Free	\$10

# SUGGESTED COVID RESTRICTIONS & SAFETY GUIDANCE

- VERMONT FORWARD PLAN REQUIREMENTS:
  - EFFECTIVE JULY 4, 2021
    - NO STATE GATHERING LIMIT IS ANTICIPATED. UNIVERSAL GUIDANCE WILL NO LONGER BE MANDATORY, BUT STRONGLY ENCOURAGED.
  - MUNICIPALITIES HAVE THE OPTION TO ENFORCE STRICTER SAFETY GUIDANCE

STAFF RECOMMENDS REQUIRING ALL POOL VISITORS TO BE MASKED WHEN NOT ACTIVELY IN THE WATER AND TO REMAIN 6FT OR MORE AWAY FROM ANYONE NOT IN THEIR GROUP.

# EXPLORING OPENING OPTION 1: CHANGING HOURS

- **CURRENT POOL HOURS:**

- MONDAYS - FRIDAYS:

- **MORNING LAP SWIM** (*MUST HOLD A SEASON PASS*): 7:00 - 8:00 AM
- **GENERAL SWIM:** 1:00 - 4:15 PM
- **FAMILY SWIM:** 4:30 - 7:00 PM

- SATURDAYS & SUNDAYS:

- **GENERAL SWIM:** 1:00 - 5:30 PM

HOWEVER, DAY CAMP, WHICH WE WANT TO PRIORITIZE THE SAFETY OF, RUNS:

- MONDAY-FRIDAYS 7:45AM-4:45PM

# EXPLORING OPENING OPTION 1: CHANGING HOURS

- THE RECOMMENDED UPDATES TO THE POOL HOURS FULLY SEPARATE THE PUBLIC AND THE DAY CAMP ACCESS- BY EXTENDING POOL HOURS INTO THE EVENING AND REMAINING THE SAME ON WEEKENDS.
- **RECOMMENDED NEW POOL HOURS:**
  - MONDAYS - FRIDAYS:
    - **DAY CAMP/SWIM LESSONS/TINY TOTS SWIM LESSONS:** BETWEEN 7:45AM-4:30PM
      - (SWIM LESSONS ARE TYPICALLY 10AM-NOON)
    - **GENERAL SWIM/FAMILY SWIM:** 4:30PM-8:00PM
  - SATURDAYS & SUNDAYS:
    - **GENERAL SWIM:** 1:00 - 5:30 PM



# EXPLORING OPENING OPTION 1: CHANGING HOURS

- **BENEFITS OF CHANGING HOURS OPTION:**

- FULLY PROTECTS DAY CAMP FROM BEING IMPACTED BY A COVID OUTBREAK AT THE POOL FACILITY
  - AND PROTECTS THE PUBLIC IF DAY CAMP EXPERIENCES AN OUTBREAK
- ALLOWS THE PUBLIC TO FULLY USE ALL POOL FACILITIES, INCLUDING BOTH RAFTS, THE PAVILION, AND THE POOL HOUSE (FOR CHECK-IN AND RESTROOMS)
- GIVES ALLOWANCES FOR THE ANTICIPATED LIFEGUARD SHORTAGE AS IT REQUIRES marginally less lifeguard staffing

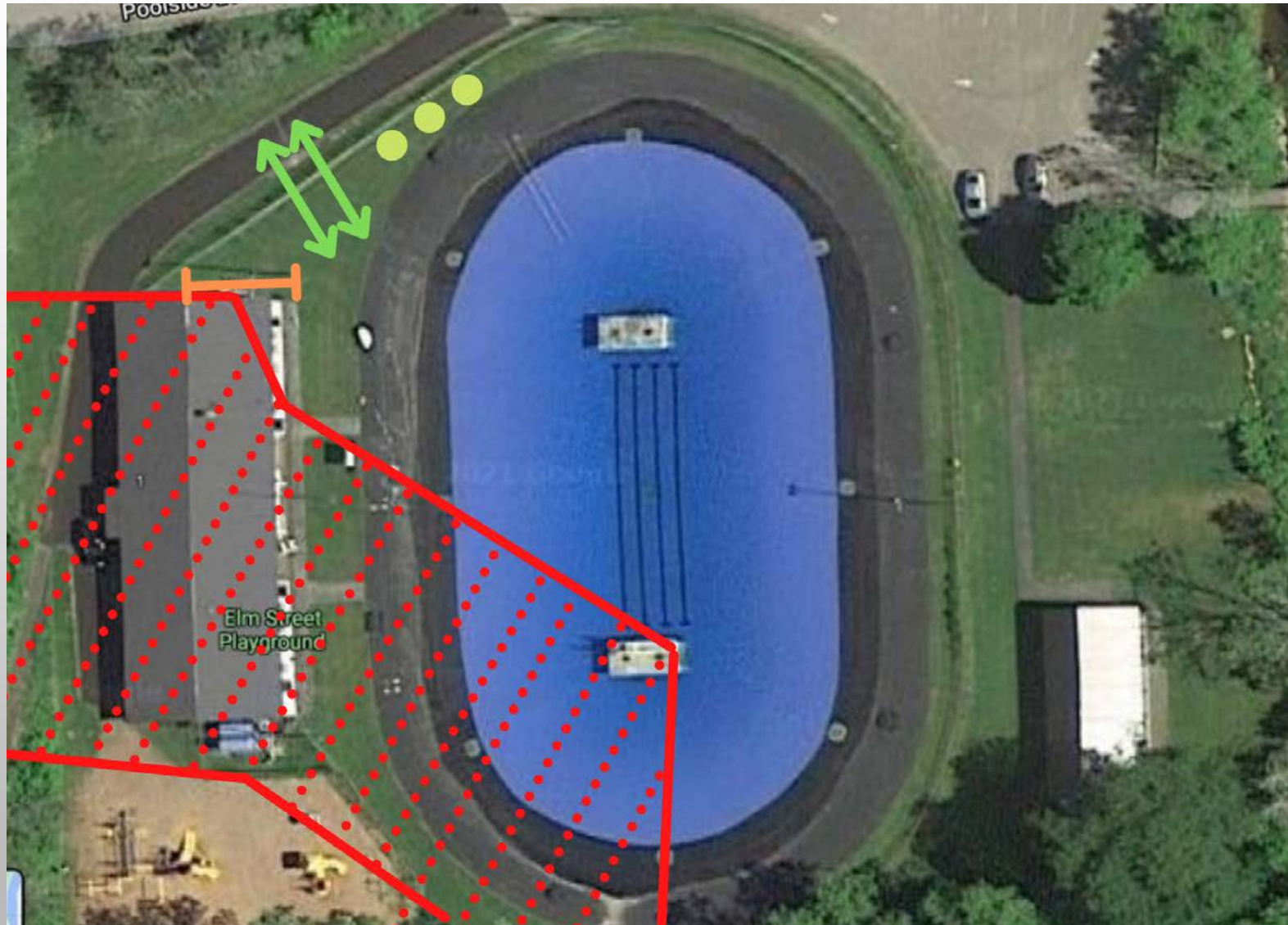
- **DRAWBACKS TO CHANGING HOURS OPTION:**

- LESS PUBLIC SWIM HOURS DURING THE DAY

# EXPLORING OPENING OPTION 2: PHYSICAL BARRIERS

- THIS OPTION INCLUDES BARRICADING OFF PORTIONS OF THE POOL AND THE WHOLE OF THE POOL-HOUSE TO THE PUBLIC, TO KEEP DAY CAMP PARTICIPANTS DISTANCED AND SAFE
- OTHER CONSIDERATIONS:
  - PORTA-JOHNS WILL BE NEEDED TO REPLACE POOL HOUSE RESTROOMS
  - ONE RAFT WILL BE FOR DAY-CAMP USE ONLY
  - 1/4 OF THE POOL DECK AND POOL WILL BE FOR DAY-CAMP USE ONLY
  - HOURS COULD BE MORE FLEXIBLE UNDER THIS MODEL, POSSIBLY REQUIRING MORE LIFEGUARDS

# DEMONSTRATION OF POSSIBLE CONFIGURATION



## KEY:

- Red: For use by Day-Camp only
- Green Arrows: Gate in fence as new entrance
- Orange: New 'check-in' window on side of Pool-house
- Yellow Dots: Location of Porta-johns

## EXPLORING OPENING OPTION 2: PHYSICAL BARRIERS

- THERE WILL BE SLIGHT CHANGES TO THE SCHEDULE, STAFFING DEPENDING, BUT WILL GENERALLY BE SIMILAR TO PAST YEARS, WITH THE EXCEPTION OF LAP SWIM, WHICH WILL BE MOVED TO AFTERNOONS
- THE POOL ENTRANCE WOULD BE A SIDE-GATE IN THIS OPTION, ALLOWING FOLKS TO CHECK-IN, PAY, AND BUY SNACKS THROUGH THE WINDOWS OF THE POOL HOUSE

# EXPLORING OPENING OPTION 2: PHYSICAL BARRIERS

- BENEFITS OF PHYSICAL BARRIERS OPTION:
  - ALLOWS FOR MORE HOURS FOR PUBLIC SWIM
  - ALL GROUPS CAN USE THE POOL AT THE SAME TIME, WITH SAFETY IN MIND
- DRAWBACKS TO PHYSICAL BARRIERS OPTION:
  - BLOCKS THE PUBLIC FROM USING MOST POOL FACILITIES, INCLUDING ONE RAFT, THE PAVILION (UNTIL 4:45PM), AND THE POOL HOUSE (FOR CHECK-IN AND RESTROOMS)
  - REQUIRES A HIGHER PRESENCE OF LIFEGUARDS, WHICH MAY NOT BE AVAILABLE
  - COST FOR PORTA-JOHNS REQUIRED

# EXPLORING OPENING OPTION 2: PHYSICAL BARRIERS

- NEW APRIL 23<sup>RD</sup> CHANGES TO SUMMER CAMP GUIDANCE
  - NEW GUIDANCE INFORMATION FROM ACCD SUSPENDS THE REQUIREMENT FOR SEPARATE RESTROOMS FOR DAY-CAMP ATTENDEES.
  - HOWEVER, THE CDC IS RECOMMENDING THAT PROGRAMS STAGGER USE OF [SHARED] SPACES BY REDUCING THE GROUP SIZE IN THE AREA AT ONE TIME OR REMAINING IN COHORTED GROUPS WHILE SANITIZING SHARED OBJECTS AND HIGH TOUCH SURFACES BETWEEN GROUPS. AND THAT PREVENTIVE BEHAVIORS SUCH AS WEARING A MASK, HANDWASHING, AND COHORTING ARE NEEDED.

# EXPLORING OPENING OPTION 2: PHYSICAL BARRIERS

- NEW APRIL 23<sup>RD</sup> CHANGES TO SUMMER CAMP GUIDANCE
  - ADDITIONALLY, CDC GUIDANCE STILL STATES THAT “CHILD CARE PROGRAM[S] MIGHT NEED TO IMPLEMENT SHORT-TERM BUILDING CLOSURE PROCEDURES IF AN INFECTED PERSON HAS BEEN AT THE FACILITY DURING THEIR INFECTIOUS PERIOD”
    - THE STATE WILL NEED TO DETERMINE IF MONTPELIER’S PROGRAMS CLOSE, IN CONSULTATION WITH THE DEPARTMENT OF HEALTH
  - DUE TO STAFFING AVAILABILITY AND HIGHEST SAFETY PRIORITIES FOR CHILDREN IN MIND, THE CITY STILL RECOMMENDS SEPARATING THE POOL HOUSE IN THIS OPTION

# GENERAL CONSIDERATIONS

- LIFEGUARDS

- THERE IS STILL CONCERN ABOUT AVAILABILITY OF LIFEGUARDS
- WORKED WITH THE RED CROSS TO GET TRAINING AVAILABLE, THE RECREATION DEPARTMENT HAS LET THEM KNOW WE WILL NEED DEDICATED TRAINING DAYS FOR OUR STAFF
  - NOTE: CPR IS NOW TAUGHT AS A 'BREATHLESS' TECHNIQUE- COMPRESSIONS ONLY!
- SWIM LESSON AVAILABILITY HINGES ON IF ANY OF THE HIRED LIFEGUARDS CAN PASS A WATER SAFETY INSTRUCTOR COURSE



# GENERAL CONSIDERATIONS

- COMMUNITY BENCHMARKING

- BARRE CITY POOL:

- BARRE IS OPENING THEIR POOL UNDER NORMAL CONDITIONS AND FOLLOWING UNIVERSAL SAFETY GUIDANCE FROM THE GOVERNOR. THEY DO NOT OPERATE A DAY-CAMP AT THEIR LOCATION.
    - THEY REPORTED THEY MAY HAVE TO CHANGE THEIR OPERATING HOURS DUE TO LOW STAFFING AVAILABILITY (LIFEGUARDS).

# GENERAL CONSIDERATIONS

- COMMUNITY BENCHMARKING

- WATERBURY POOL:

- REC DIRECTOR HAS STAFF WHO CAN HELP TRAIN OUR LIFEGUARDS SO WE CAN GET THEM LICENSED – WATERBURY WILL ASSIST US IN GETTING A BULK RATE FOR THE TRAINING
    - THEY ARE CAPPING THE POOL LIMITS TO 80 PEOPLE IN THEIR POOL. AND SECTIONING OFF SECTIONS OF THE POOL TO LIMIT EXPOSURE- REQUIRING RESERVATIONS FOR SWIM LANES
    - SPACING SWIMMING LESSONS SO THERE IS 15 MINUTES BETWEEN LESSONS
    - THEY WILL BE REQUIRING CONTACT TRACING THROUGH INFORMATION FORMS FOR NON-POOL MEMBERS
    - THEIR DAY CAMP IS NOT LICENSED.

# GENERAL CONSIDERATIONS

- THE SUMMER MATTERS GRANT PROGRAM
  - BOTH THE MONTPELIER RECREATION DIRECTOR AND THE ASSISTANT CITY MANAGER ATTENDED THE TRAINING SESSION FOR THIS GRANT ON 4/20
  - GRANT TIMELINE:
    - APPLICATIONS DUE: MAY 5, 2021 / AWARD NOTIFICATIONS: MAY 26, 2021 / AWARD PERIOD: JUNE 14, 2021-SEPTEMBER 15, 2021
  - GRANT WILL WORK AS A REIMBURSEMENT PROGRAM, NOT UP-FRONT COSTS
    - MINIMUM REQUEST: \$20,000, MAX IS \$75,000 – WITH \$1.5 MILLION AVAILABLE FOR THE WHOLE STATE
  - THE CITY AIMS TO APPLY FOR INCREASED FUNDING FOR LIFEGUARDS AND THEIR TRAINING, BUT OPENING PLANS DO NOT RELY ON THIS FUNDING

# GENERAL CONSIDERATIONS

- **CHILD LICENSURE REQUIREMENTS**

- THE DAY CAMP, AS A LICENSED CHILD CARE PROVIDER, FOLLOWS RULES SEPARATE FROM THE VERMONT FORWARD OR UNIVERSAL GUIDANCE PLAN. THESE RULES HAVE BEEN RECENTLY UPDATED (EFFECTIVE MAY 1<sup>ST</sup>) BUT ARE ALWAYS SUBJECT TO CHANGE

- **FLEXIBILITY**

- THESE PLANS ARE OPTIONS AND CAN BE MODIFIED AS NEEDED THROUGHOUT THE SUMMER SEASON, AS COVID STATISTICS CHANGE, AS GUIDANCE IS UPDATED, OR AS COUNCIL RECOMMENDS.

# FINANCIAL CONSIDERATIONS

## OPTION 1: AMENDING POOL HOURS

- TOTAL ANTICIPATED STAFF COSTS
  - \$45,783
- OTHER POOL START UP EXPENSES
  - \$44,900

**TOTAL: \$90,683**

## OPTION 2: PHYSICALLY 'BARRICADING'

- TOTAL ANTICIPATED STAFF COSTS
  - \$51,138
- OTHER POOL START UP EXPENSES
  - \$44,900
- PORTA-JOHNS
  - ESTIMATES \$175 PER ACCESSIBLE UNIT PER MONTH
  - ESTIMATE TOTAL: \$1,050

**TOTAL: \$97,088**

\*\*This total is not exhaustive, other costs go into opening the pool. These costs are those with the most variation.

## ADDITIONAL OPTION 3:

- AS A NON-RECOMMENDED OPTION, COUNCIL COULD ALSO DECIDE TO OPEN THE POOL WITH ITS REGULAR HOURS AND NO OTHER SAFETY CONSIDERATIONS OUTSIDE OF THE RECOMMENDED WAIVERS, MASKS, AND DISTANCING.

The image features a light gray background with a subtle gradient. In the top-left and bottom-right corners, there are several realistic water droplets of various sizes, rendered with soft shadows and highlights to give them a three-dimensional appearance. The word "QUESTIONS?" is centered in the upper half of the image in a bold, black, sans-serif font.

**QUESTIONS?**