



BOCC ROADWAY RESURFACING WORKSHOP

May 23, 2023

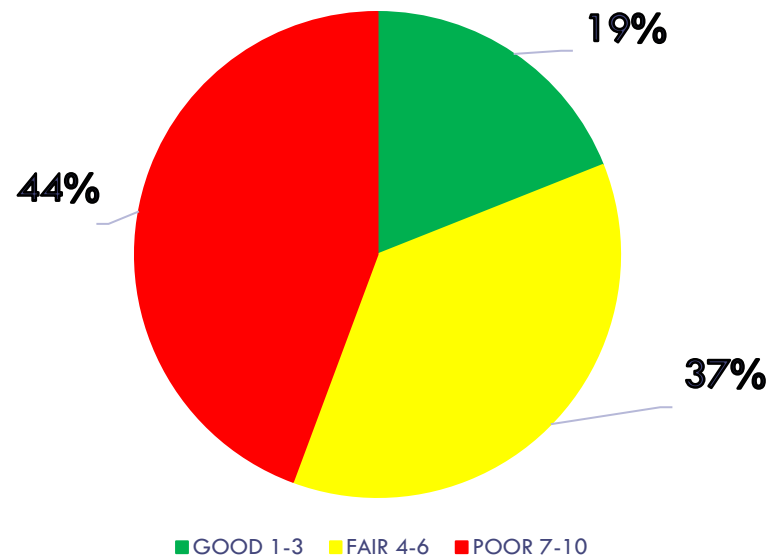
One of the most important challenges that our County currently faces is how to evaluate, maintain, and rehabilitate its existing roadway network to meet today's trends toward heavier traffic loadings and higher traffic volumes.



There are approximately 1844 miles of County maintained asphalt roads.

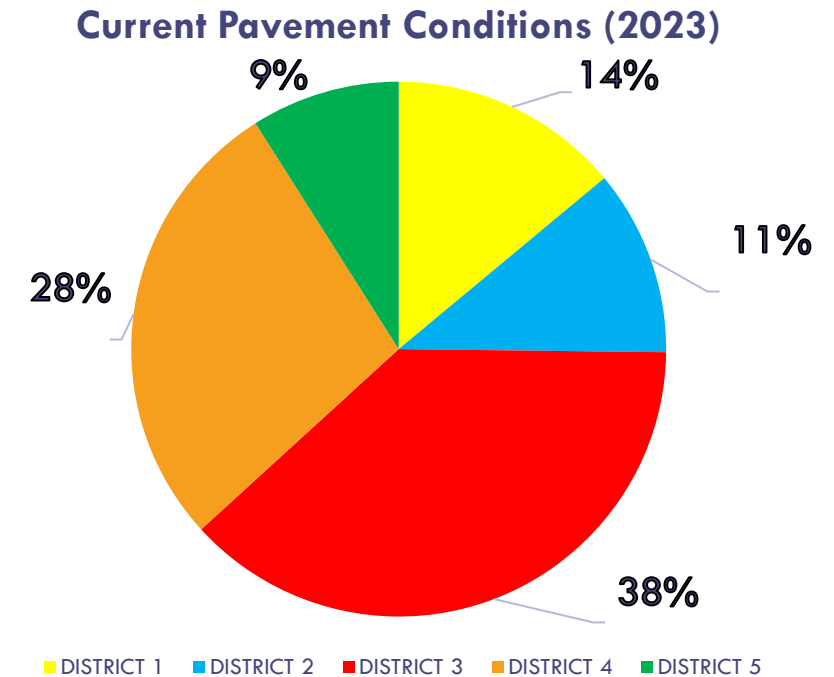
- 321 miles of **Major** and **Minor** Collectors.
 - Of these, 311 miles are SCOP eligible.
- 1523 miles of **Local** roads.

Current Pavement Conditions (2023)



Today, there are approximately 800 miles of County maintained asphalt roads rated 7+.

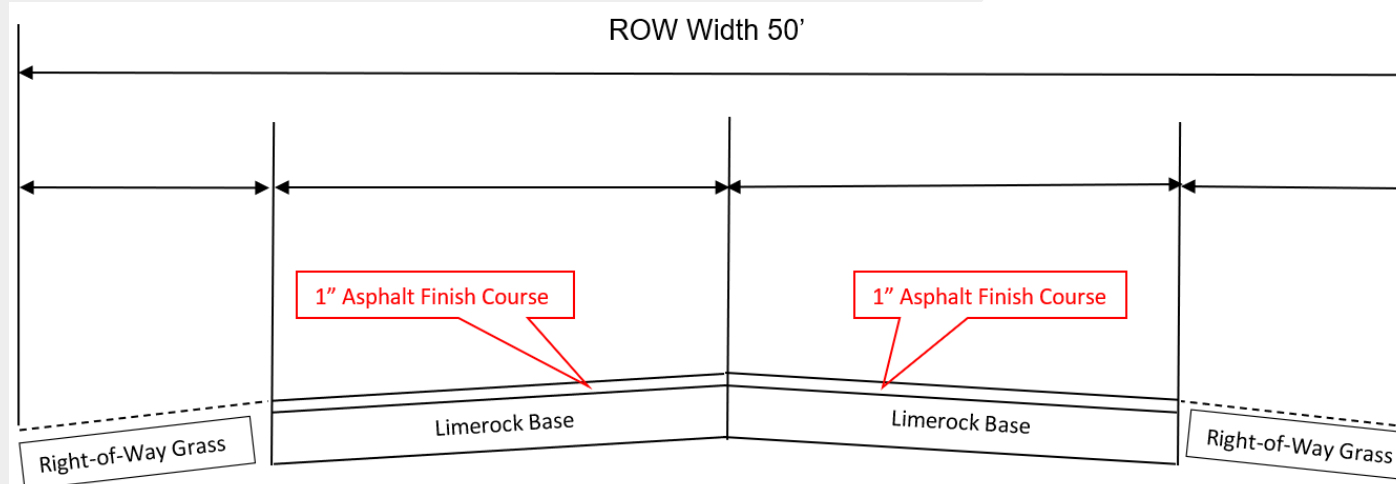
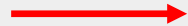
- Approximately 14% of those miles are in District 1.
- Approximately 11% of those miles are in District 2.
- Approximately 38% of those miles are in District 3.
- Approximately 28% of those miles are in District 4.
- Approximately 9% of those miles are in District 5.



Today, approximately \$188 Million is needed to bring all local and SCOP roads up to current County Standards (Rating of 6 and below).

CHOOSING A TREATMENT (CONT.)

Limerock Base

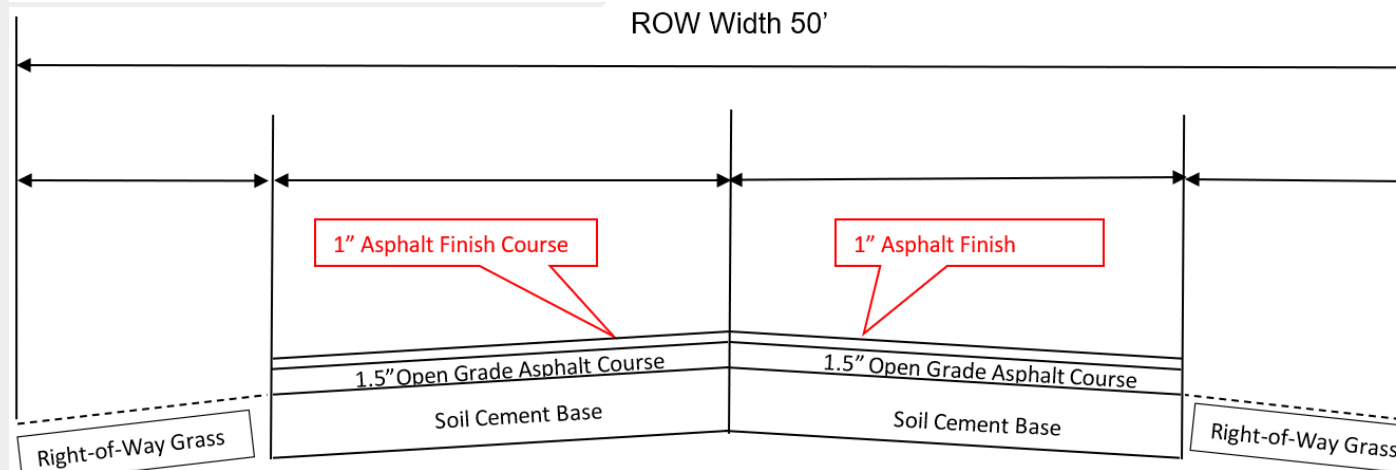
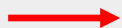


Current Costs Per Mile

Limerock Base – \$186,000

Soil Cement Base - \$315,000

Soil Cement Base



Pine Ridge and Citrus Springs Roads have a Soil Cement Base:

- Approximately 550 miles total.
- Approximately 313 miles need to be resurfaced.



There have been multiple approaches to how roads have been selected for treatment in the past.

- **Worst to First** – Only roads rated 10 were selected.
- **Commissioner Selection** – Commissioners choose which roads to resurface.
- **Road Rating and Density** (Moved from 6+ to 7+ three years ago.)

CURRENT RESIDENTIAL RESURFACING ROAD SELECTION METHODOLOGY

GAS TAX

- Roads rated 7+ are sorted by density (homes per foot of road).
- If two roads of equal length are both rated above a 7 and one has 9 homes and the other 10 homes, the road with 10 homes is paved first.
- Roads are selected for resurfacing in that order until the entirety of the resurfacing budget is allocated.
- Most of the Resurfacing funding is currently applied to roads rated 7 & 8 due to density. As a result, roads rated 9 & 10 are rarely resurfaced.

CITRUS SPRINGS MSBU

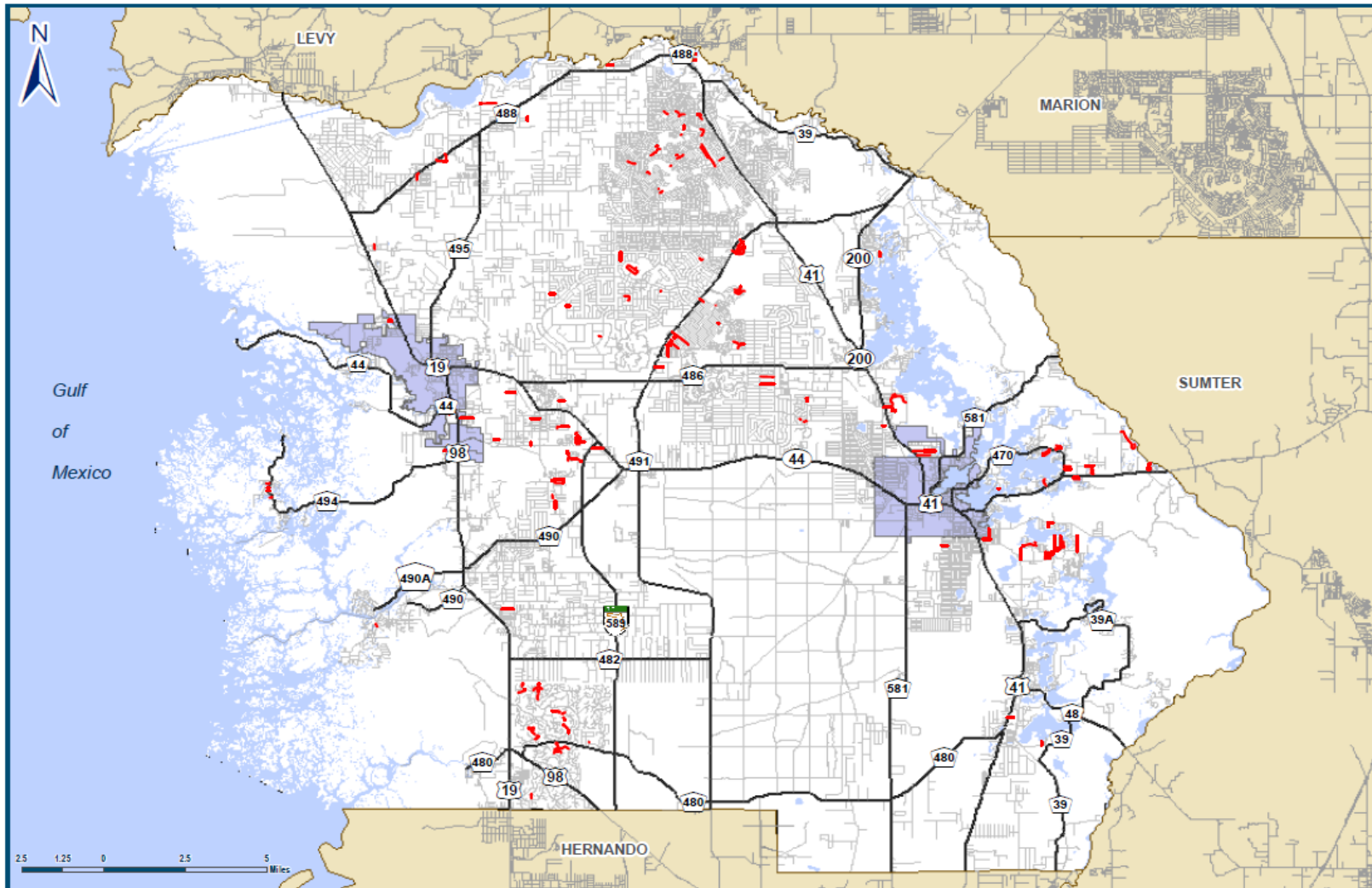
- Worst to First.
- Density is not a factor when selecting these roads for resurfacing.

Option #2

Funding per District is proportional
to miles of roads in each District (7+
Based on Density)

2024 - \$8 Million

Approximately 36.12
miles of road will be
paved benefiting 2340
homes.



Legend

— Selected Roadways

Percent Roads in District equals
Percent Allocated Dollars - \$ 8 Million
FY 2024

Geographic Information Systems

Prepared By : Susan O'Connell
Date: April 27, 2023
Source: Enterprise Geodatabase
Map Number: SO001428

Cynthia P. Sletten
Director

This information is for general information only. The Citrus County
Geographic Information Systems Division makes every effort to provide accurate
information, but it is not guaranteed. Users are advised to verify the information
before using it for any purpose. Citrus County, Florida, is not responsible for
any errors or omissions in this information, including but not limited to, changes
in data, or changes in the way the information is presented or displayed.

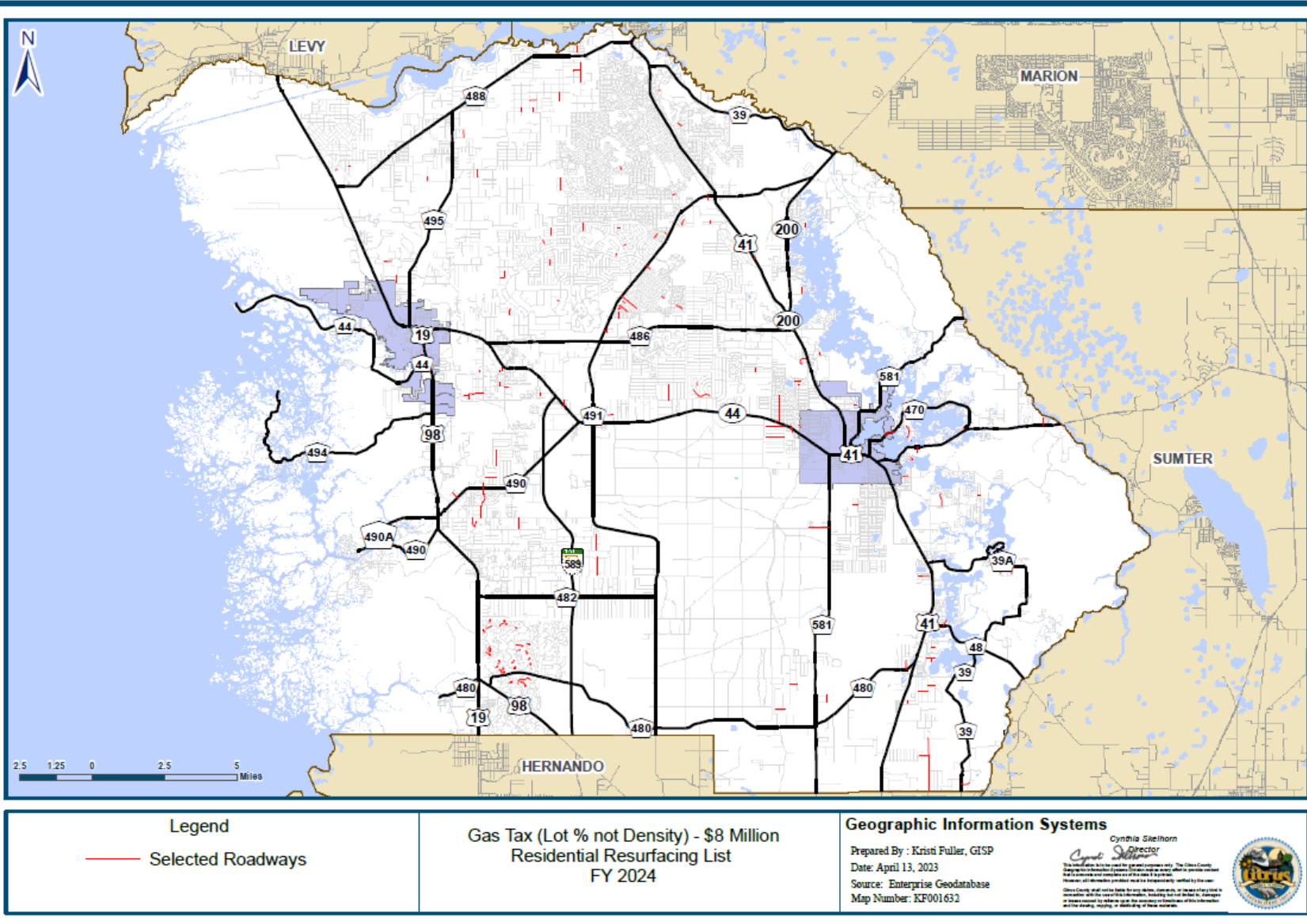


Option #3

Percent of Improved Lots along
Road (7+)

2024 - \$8 Million

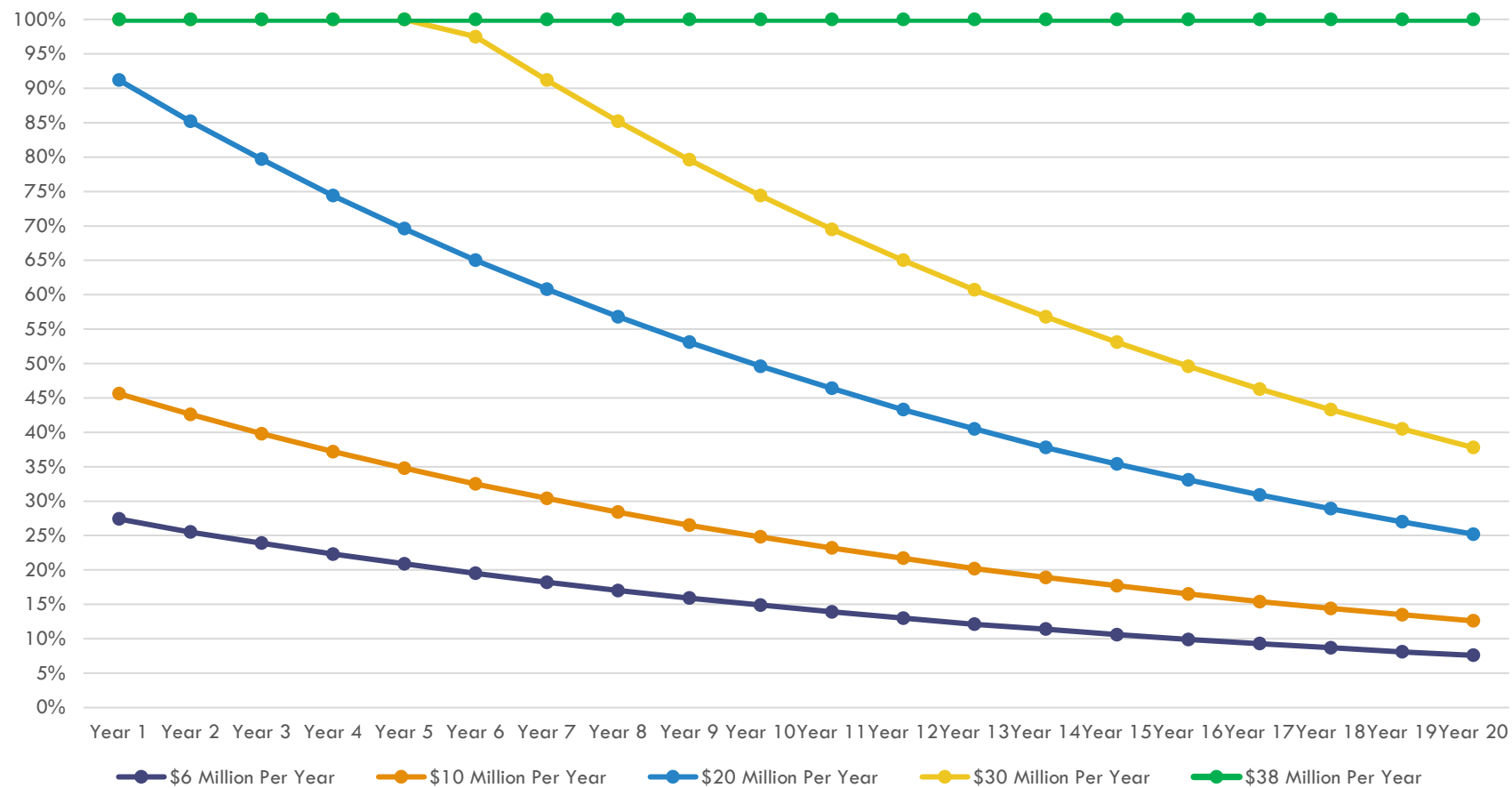
Approximately 35.55
miles of road will be
paved benefiting 1231
homes.



PROGRAM OPTIONS

	Potential Resurfacing Programs	Miles	Homes
OPTION#1	Current – 7+ Roads w/ Density Formula.	36.47	2229
OPTION #2	Each District receives a proportional amount of Resurfacing dollars equivalent to the percentage of the total roads in the County. (7+ w/ Density)	36.12	2340
OPTION #3	7+ Roads using Percentage of Improved Lots Along Road.	35.55	1231
OPTION #4	Worst to First. (No Density)	23.61	621

PERCENTAGE OF ROADS MEETING COUNTY STANDARD (6+ AND BELOW) PER YEAR (INCLUDES INFLATION)





RESIDENTIAL
RESURFACING

Questions