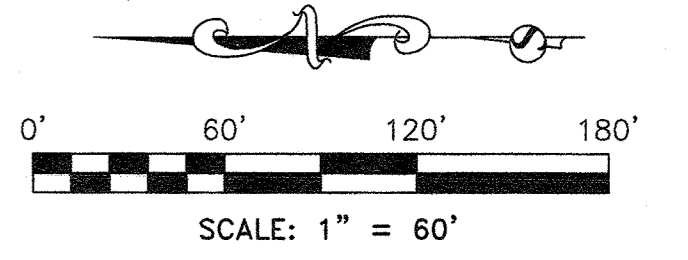


TIDAL WAVE - LECANTO

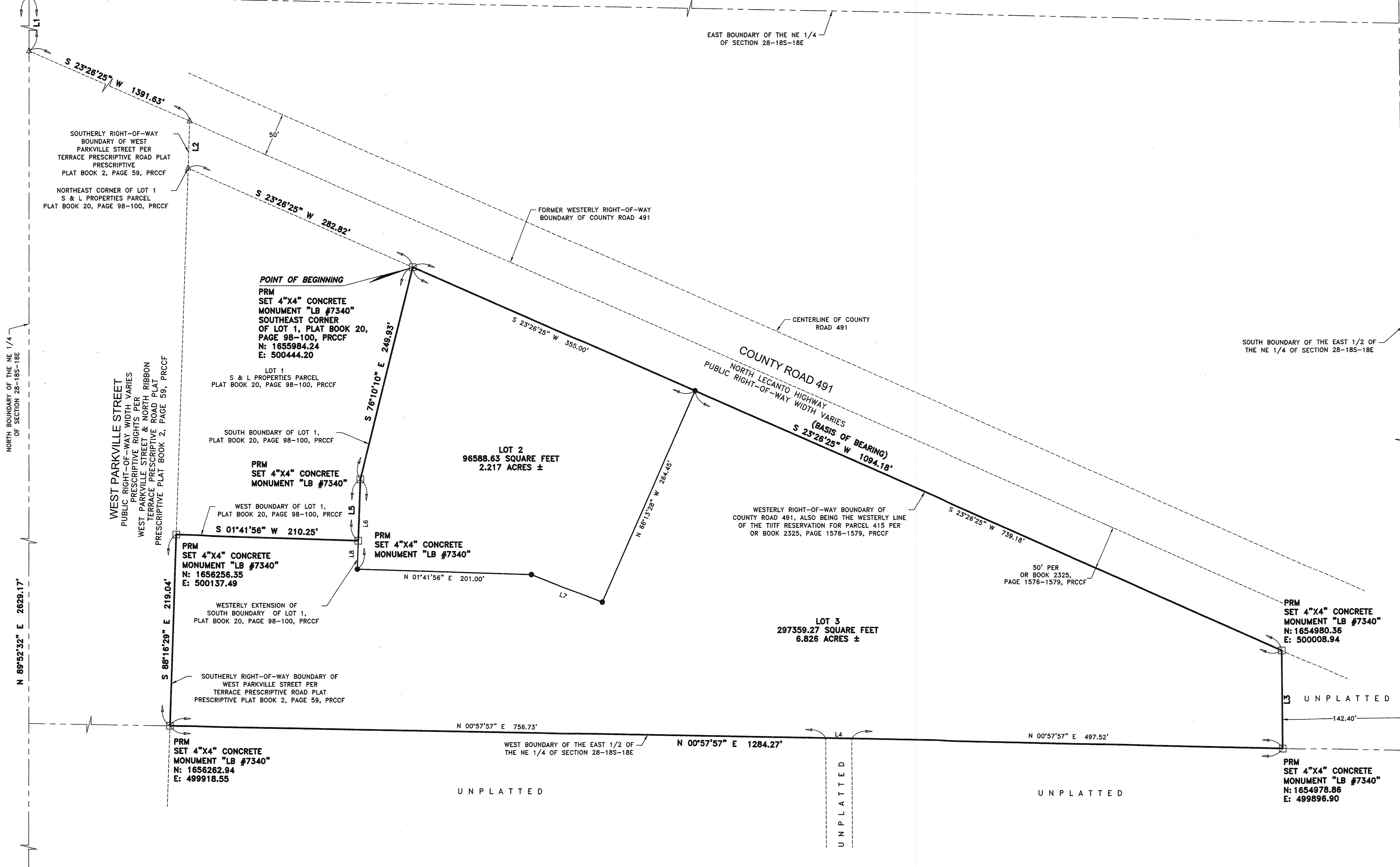
A PLAT IN A PORTION OF THE NORTHEAST 1/4 OF SECTION 28, TOWNSHIP 18 SOUTH, RANGE 18 EAST, CITRUS COUNTY, FLORIDA



POINT OF COMMENCEMENT
NORTHEAST CORNER OF SECTION 28-18S-18E
CCR# 087129
N: 1657519.07
E: 501254.10

LEGEND

- PERMANENT REFERENCE MONUMENT SET 4"x4" CONCRETE MONUMENT "LB #7340"
- SET 5/8" CAPPED IRON ROD "L.B. #7340"
- ⊕ CERTIFIED SECTION CORNER
- △ DESCRIPTIVE POINT
- OR OFFICIAL RECORD BOOK
- NO. NUMBER
- N: NORTHING
- E: EASTING
- SE SOUTHEAST
- SW SOUTHWEST
- NE NORTHEAST
- NW NORTHWEST
- LB LICENSED BUSINESS
- L# REFERENCE TO LINE TABLE
- C# REFERENCE TO CURVE TABLE
- PSM PROFESSIONAL SURVEYOR AND MAPPER
- PRM PERMANENT REFERENCE MONUMENT
- T TOWNSHIP
- R RANGE
- ID. IDENTIFICATION
- TIFF TRUSTEES OF THE INTERNAL IMPROVEMENT TRUST FUND OF THE STATE OF FLORIDA
- PRCCF PUBLIC RECORDS CITRUS COUNTY FLORIDA
- CCR CERTIFIED CORNER RECORD PER FDEP
- FDEP FLORIDA DEPARTMENT OF ENVIRONMENTAL PROTECTION
- TL TIE LINE
- BFE BASE FLOOD ELEVATION



LINE INFORMATION:

LINE	BEARING	DISTANCE
L1	S 89°52'32" W	89.85'
L2	N 88°16'29" W	53.99'
L3	S 89°13'56" W	112.05'
L4	N 00°57'57" E	30.01'
L5	S 88°12'14" E	70.30'
L6	S 88°12'14" E	102.89'
L7	N 21°21'53" E	87.14'
L8	S 88°12'14" E	32.59'

NORTHWEST CORNER OF THE NE 1/4 OF SECTION 28-18S-18E
CCR# 087130

SHEET INDEX
SEE SHEET 1 FOR LEGAL DESCRIPTION, NOTES, DEDICATION, ACKNOWLEDGEMENTS, CERTIFICATIONS & APPROVALS
SEE SHEET 3 FOR EASEMENT DETAILS

NOTICE:
THIS PLAT, AS RECORDED IN ITS GRAPHIC FORM, IS THE OFFICIAL DEPICTION OF THE SUBDIVIDED LANDS DESCRIBED HEREIN AND WILL IN NO CIRCUMSTANCES BE SUPPLANTED IN AUTHORITY BY ANY OTHER GRAPHIC OR DIGITAL FORM OF THE PLAT. THERE MAY BE ADDITIONAL RESTRICTIONS THAT ARE NOT RECORDED ON THIS PLAT THAT MAY BE FOUND IN THE PUBLIC RECORDS OF THIS COUNTY.

SURVTECH SOLUTIONS, INC.
10220 U.S. Highway 92 East
Tampa, FL 33610
phone: (813)-621-4929
fax: (813)-621-7194
Licensed Business Number 7340
email: sbrown@survtechsolutions.com
http://www.survtechsolutions.com

PROJECT NO. 221596

