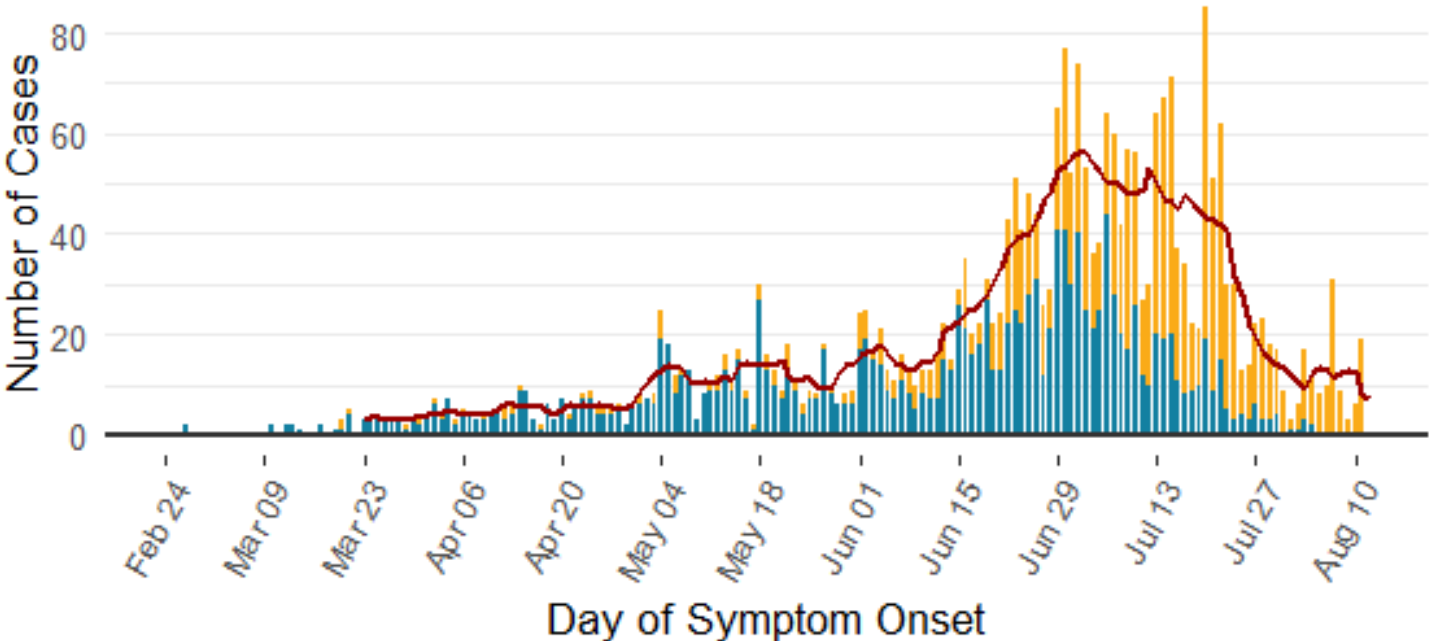


COVID-19 in Otero County: an Epidemiology Update

Salina Torres, PhD, MPH

Infectious Disease Epidemiologist
Epidemiology and Response Division

Cases by Day of Symptom Onset in the Southwest Region



— 7-day Average
 ■ Not Recovered
 ■ Recovered

As of August 21 2020 - Recent cases may not have been reported

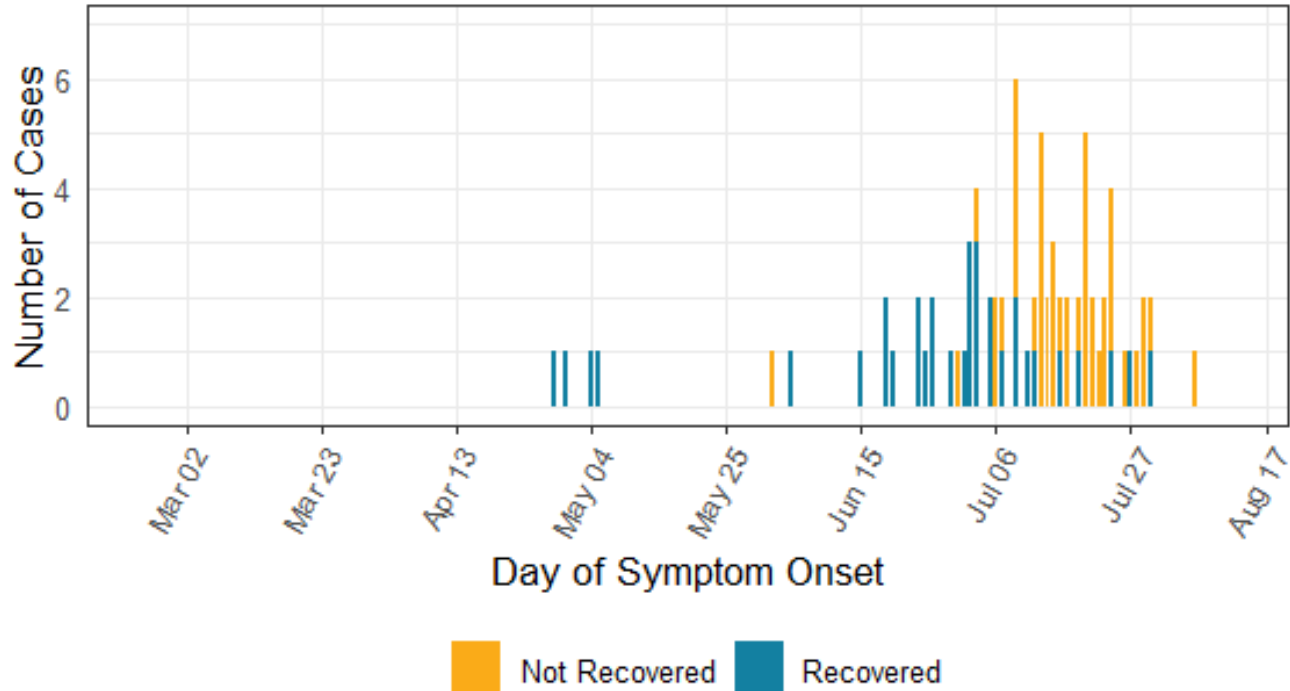


Investing for tomorrow, delivering today.



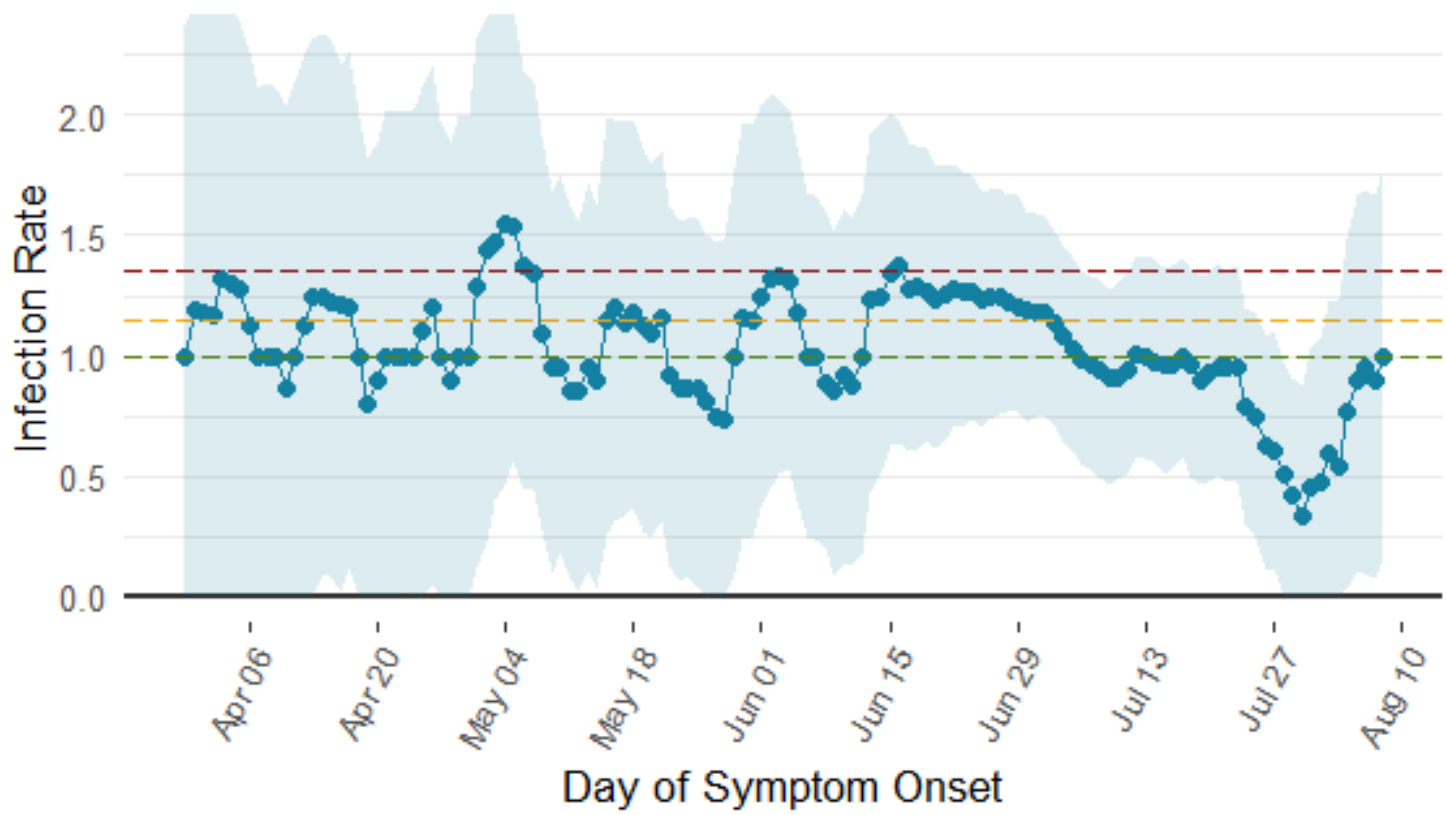
1190 S. St. Francis Drive • Santa Fe, NM 87505 • Phone: 505-827-2613 • Fax: 505-827-2530 • nmhealth.org

Cases by Day of Symptom Onset for Alamogordo



As of August 21 2020 - Recent cases may not have been reported

Infection Rate in the Southwest Region



As of August 21 2020 - Recent cases may not have been reported



Investing for tomorrow, delivering today.



1190 S. St. Francis Drive • Santa Fe, NM 87505 • Phone: 505-827-2613 • Fax: 505-827-2530 • nmhealth.org

Key

- Low Level Endemic <1.0
- Approaching Low Level Endemic 1.0-1.05
- Requiring further mitigation >1.05

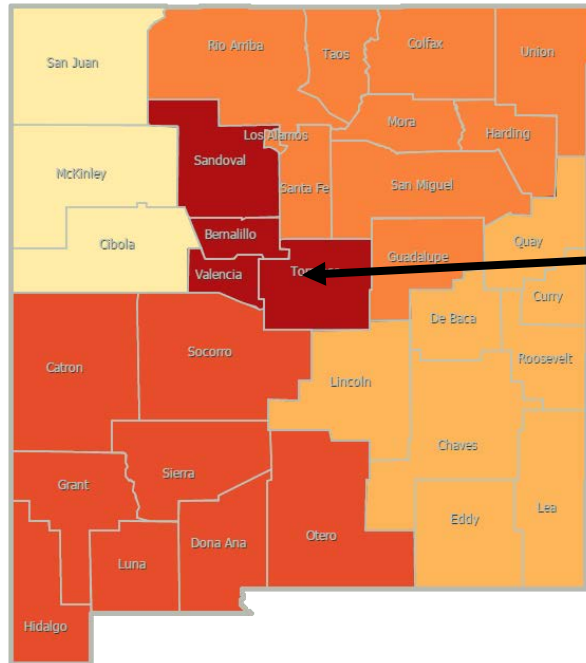
Northwest
R_effective 0.5 ↑

Northeast
R_effective 0.9 ↑

Metro
R_effective 0.7 ↑

Southwest
R_effective 0.7 ↓

Southeast
R_effective 1.0 =



As of August 10, 2020

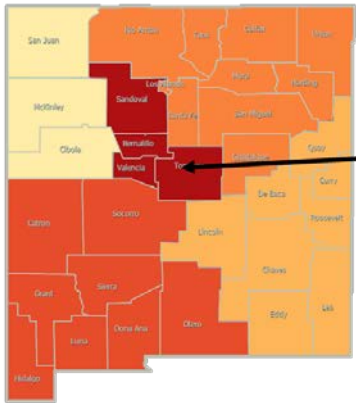
Northwest
R_effective 0.2 ↓

Northeast
R_effective 0.7 ↓

Metro
R_effective 0.6 ↓

Southwest
R_effective 0.8 ↑

Southeast
R_effective 1.0 ↓



Region	R-effective	95% Confidence Interval
State	0.8	[0.4, 1.2]
Metro	0.7	[0.0, 1.9]
Northeast	0.9	[0.0, 3.2]
Northwest	0.5	[0.0, 1.8]
Southeast	1.0	[0.2, 1.9]
Southwest	0.7	[0.0, 1.9]

Courtesy of Presbyterian Healthcare Services – August 17, 2020.



Investing for tomorrow, delivering today.

